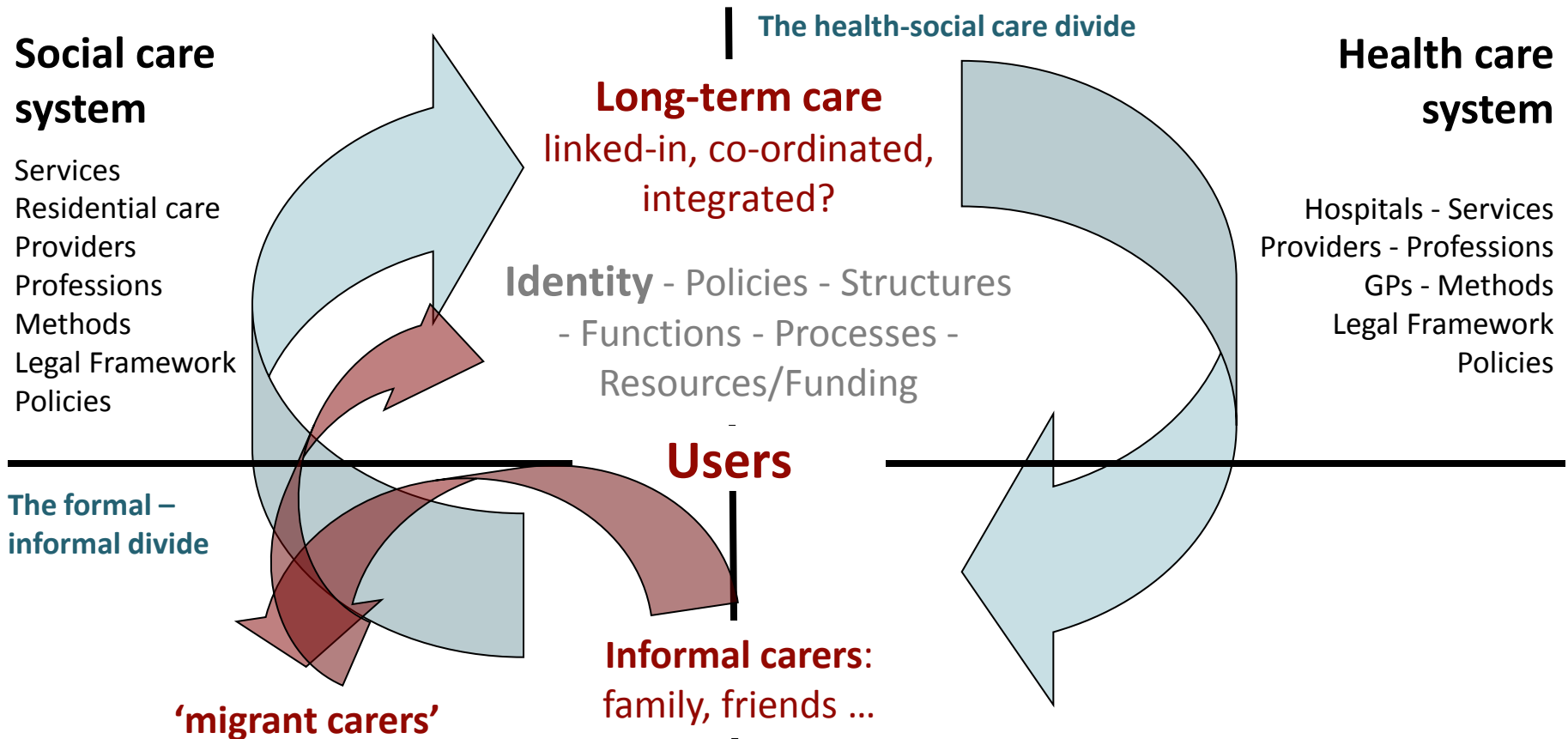
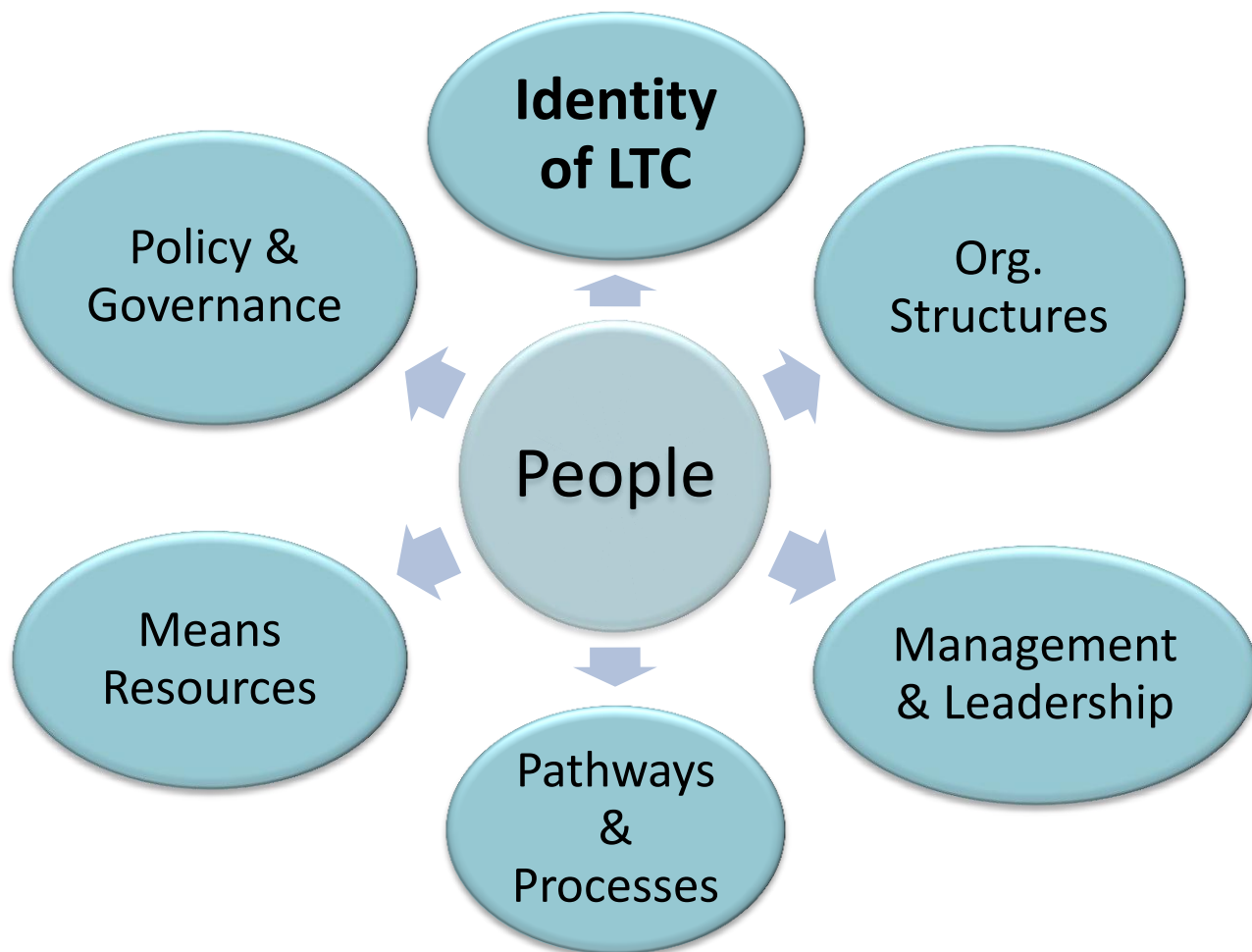


Towards an integrated system of long-term care



The elements of a long-term care system



Key-issues for developing an ‘Identity of long-term care’

- Sets of values that are shaping political, organisational and individual choices on long-term care
- Informal care and/or family ethics in legislative frameworks
- Dignity, quality of life and empowerment in policy papers
- Values relating to prevention and rehabilitation
- Values embracing the diversity of users and carers
- Organisations that explicitly address problems at the interfaces: formal/informal, health/social care, prevention and rehabilitation
- How long-term care is defined within or between organisations
- How health care providers define their purpose in relation to long-term care
- How clients are defined and positioned
- ...

Research perspectives

- **The European Quality framework for long-term care services** provides a wide range of inspirations and examples to develop the identity of long-term care in Europe
- Further research is needed
 - To monitor ‘areas of action’ and to produce evidence on the implementation of quality principles and their outcome:
‘Facts and figures on long-term care’
 - To translate quality principles into pro-active quality management (providers), quality assurance (regulators) and quality improvement (regulators and providers)
 - To use quality principles in developing new job profiles, training and quality standards across health and social care